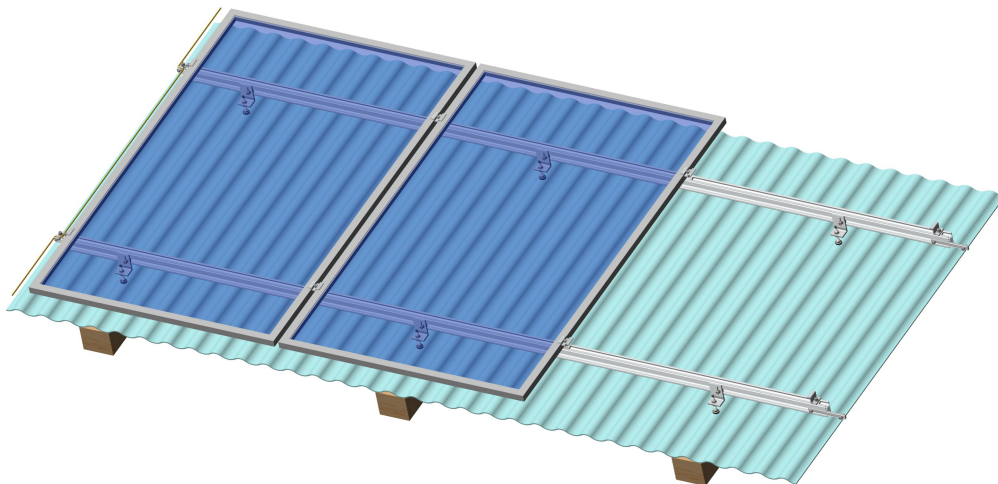
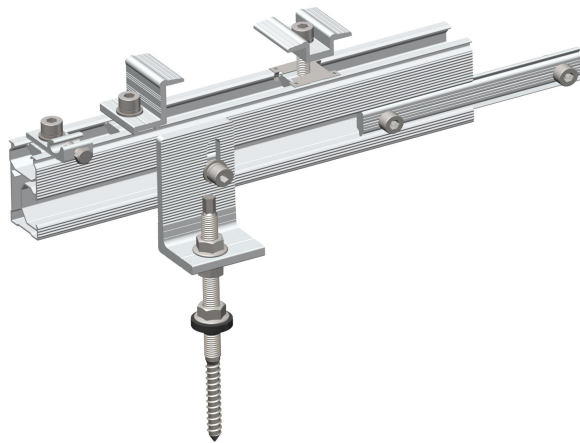




XIAMEN ART SIGN CO., LTD.

Technical Features

DR 01A Rail
MID CLAMP
END CLAMP
RAIL SPLICE
L-FEET
EARTHING KIT
HANGER BOLT



ART SIGN DR 01A Rail



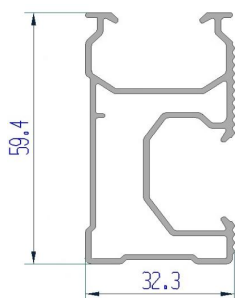
Description

Suitable for different rooftop
Beautiful appearance, smooth surface
Light weight, easy to install, high Anti-corrosion

DR rail is a highly versatile rail as it can be used via any of its two channels depending on the needs of each component and the characteristics of the different screw for each type of tile roof. It is perfectly compatible with most of ART SIGN accessories.

Technical features

The ART SIGN DR-Rail is structurally designed to support loads in two different locations and is made from 6005 T6 aluminum alloy. The recommended maximum distance between brackets is 2 m. *



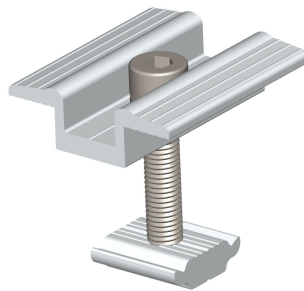
| ITEM | HEIGHT [mm] | WIDTH [mm] | LENGTH [mm] | Material |
|-------------|-------------|------------|-------------|------------------|
| DR 01A Rail | 59.4 | 32.3 | 5100 | Aluminum 6005 T5 |

*This distance is recommended when the DR Rail is in a vertical position, remember that this distance may also vary depending on the type of assembly to be performed, but must not be large than 2 m.

Notes:

- The standard extruded dimensions of this rail are 2 m | 3m | 4m | 5m | 5.8 m | 6.0 m.

MID CLAMP



Description

High class anodized aluminum

Easy to install

Flexible post spacing with stands different wind & snow loads

Available in Mill Finish, Clear Anodized, or Black Anodized Hardware

Solar Mid Clamps are designed for for frame solar panels and different kinds of solar mounting system. It's used in the middle of two panels, fasten well and good corrosion resistance. The mid clamp is a must for PV module installation.

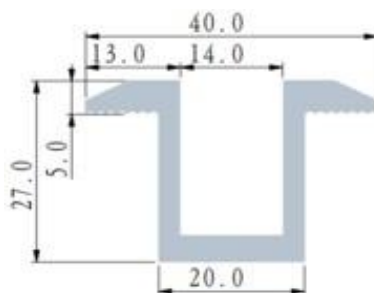
Technical features

secure the solar panels

suitable for 30mm thick panel

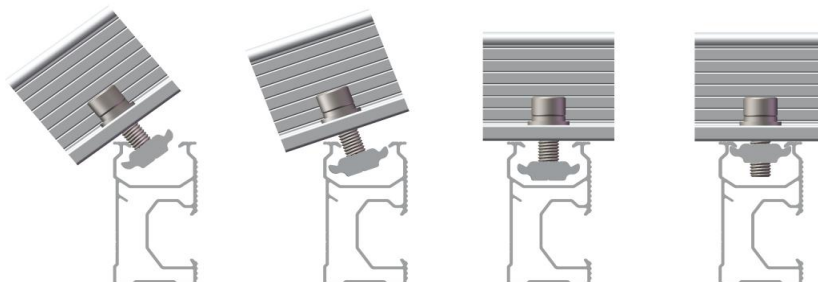
cutting length 40mm

all washers and bolts made from stainless steel

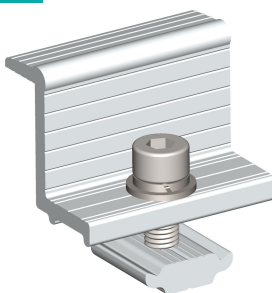


| ITEM | HEIGHT [mm] | WIDTH [mm] | LENGTH [mm] | Material |
|-----------|-------------|------------|-------------|------------------|
| MID CLAMP | 27 | 20 | 40 | Aluminum 6005 T5 |

Installation Guide



END CLAMP



Description

High class anodized aluminum

Easy to install

Flexible post spacing with stands different wind & snow loads

Available in Mill Finish, Clear Anodized, or Black Anodized Hardware

Solar End Clamps are designed for different kinds of solar mounting system. And the end clamps go at the beginning and ends of PV arrays, they are fitted to framed modules to ensure strength and safety of PV module mounting. The solar panel end clamps are well anodized to protect them from corrosion and rust. With strong material of 6005-T5, the solar panel end clamps together with other structures protect PV modules from damage of high wind load.

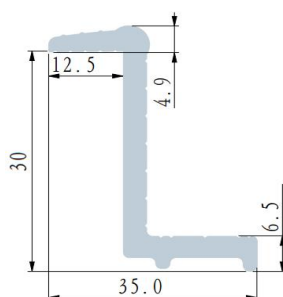
Technical features

secure the solar panels

suitable for 30mm thick panel

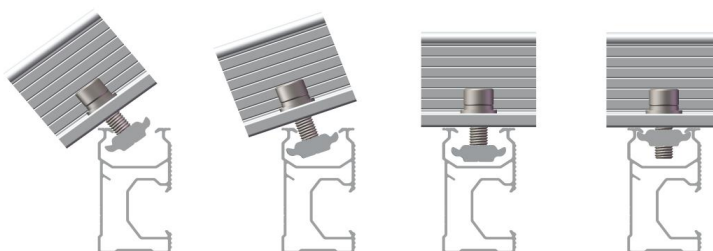
cutting length 40mm

all washers and bolts made from stainless steel



| ITEM | HEIGHT [mm] | WIDTH [mm] | LENGTH [mm] | Material |
|-----------|-------------|------------|-------------|------------------|
| END CLAMP | 30 | 35 | 40 | Aluminum 6005 T5 |

Installation Guide



RAIL SPLICE



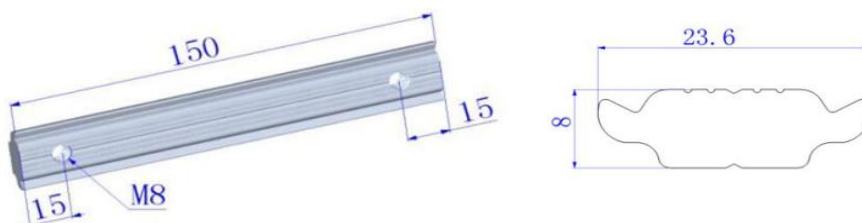
Description

Use for ART SIGN DR series Rail
Maximizing pre-assemble
Save construction cost

Connector rail splice make the installation more easily and quickly. High pre-assembly parts and customized solution to save your install time and money.

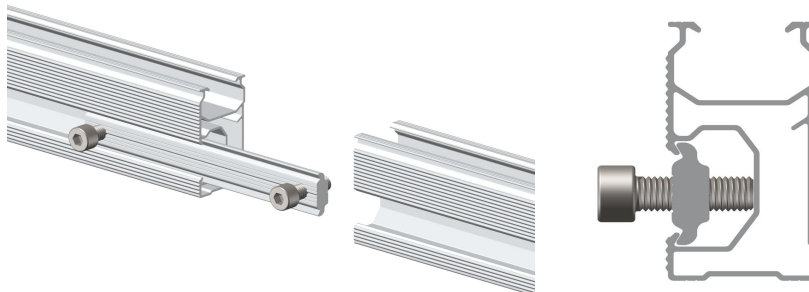
Technical features

150mm length connector joint of two pieces rails



| ITEM | HEIGHT [mm] | WIDTH [mm] | LENGTH [mm] | Material |
|-------------|-------------|------------|-------------|------------------|
| RAIL SPLICE | 8 | 23.6 | 150 | Aluminum 6005 T5 |

Installation Guide



L-FEET



Description

Suitable for roof with corrugated sheet metal, trapezoidal metal sheet.

L Feet and hanger bolts are available for L foot options, making installation faster, more competitive, and more reliable.

L feet is widely applied for commercial and residential roof project. The L feet designed for pitched tin roof, which is popular with customers, it possible to fasten almost all sorts of module.

Technical features

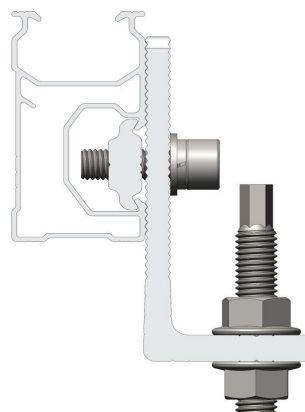
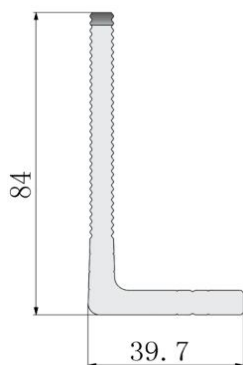
Portrait solar panel No.X solar panel length(should check the solar panel install instruction)

Instruction Landscape solar panel No. X

L bracket horizontal spacing can be up to 2m

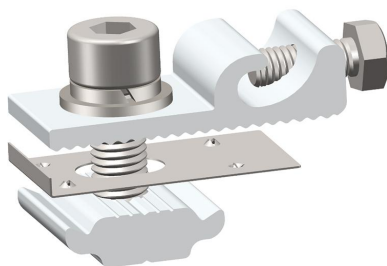
L bracket upward spacing is about 1/2 or 3/4 the length of solar panel.

Spacing between solar panels:18mm



| ITEM | HEIGHT [mm] | WIDTH [mm] | LENGTH [mm] | Material |
|--------|-------------|------------|-------------|------------------|
| L Foot | 84 | 39.7 | 50 | Aluminum 6005 T5 |

EARTHING KIT



Description

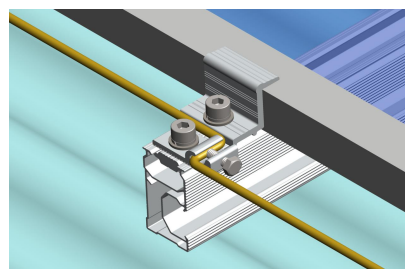
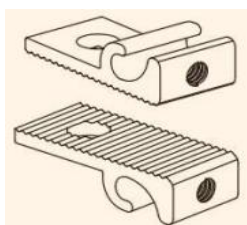
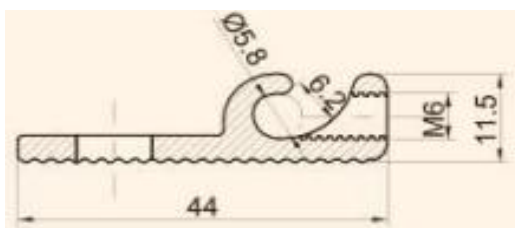
Suitable for solar mount system
Highly pre-assembled
Quick and easy installation
Used to bond wires and surfaces in grounding applications

Grounding lugs are conductive fasteners that are used to secure a grounding conductor. They are used to provide a safe and alternate path for excess electricity. Wiring faults in circuits can cause catastrophic damage to the connected devices.

Our grounding lug bonding bridge provides reliable intersystem bonding between power and communication grounding systems in commercial and residential applications.

Technical features

Available in either aluminum to suit customer specification
Heavy duty plated slotted or allen bolt for easy installation
Each lug accepts a range of cable sizes
Stainless steel earth plate



| ITEM | HEIGHT [mm] | WIDTH [mm] | LENGTH [mm] | Material |
|--------------|-------------|------------|-------------|------------------|
| EARTHING KIT | 11.5 | 20 | 44 | Aluminum 6005 T5 |

EARTHING PLATE

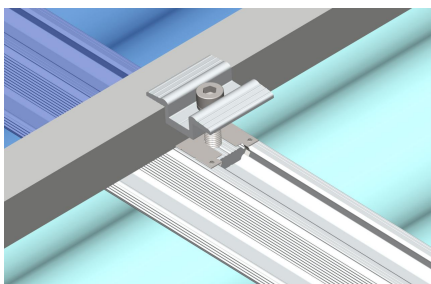


Description

Earthing plate used for ensuring good grounding connection between adjacent solar panel frames on DR rails.

Technical features

Stainless steel material



| ITEM | HEIGHT [mm] | WIDTH [mm] | LENGTH [mm] | Material |
|--------------|-------------|------------|-------------|----------|
| EARTHING KIT | 11.5 | 20 | 44 | SUS304 |

HANGER BOLT



Description

Suitable for tile solar mount system

Delivered pre-assembled with an EPDM sealing washer, securing nuts and two locking nuts.

Hanger bolts are headless bolts that feature one half with a lag screw thread and the other half with a machine screw threading and a blunt tip. They are typically used to hang materials from wooden structures.

Hanger Bolts are used primarily in wood applications to add an external thread. One side has a self tapping lag thread for use in wood, while the other end has UNC threads to accept a standard nut. Ideal for applications that require a removable fixture or other fastenings into wood.

Technical features

Stainless steel material

| ITEM | SIZE | HEIGHT [mm] | Dia [mm] | Material |
|-------------|---------|-------------|----------|----------|
| HANGER BOLT | M10X200 | 200 | M10 | SUS 304 |