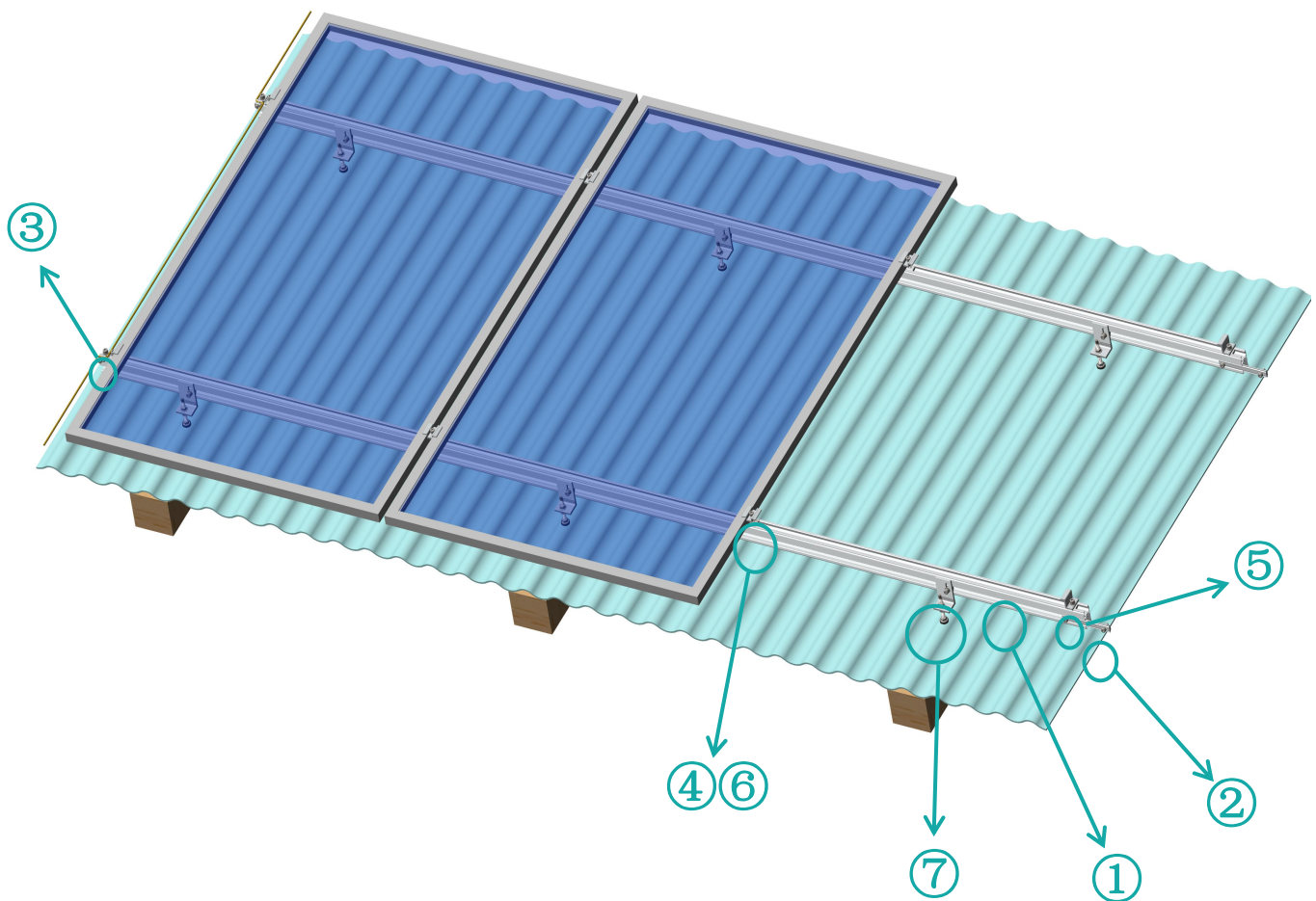


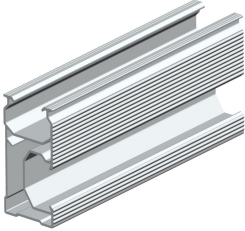
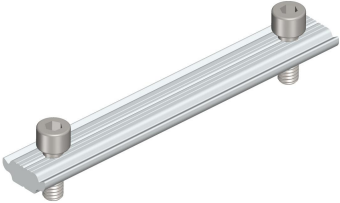
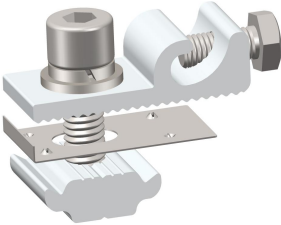
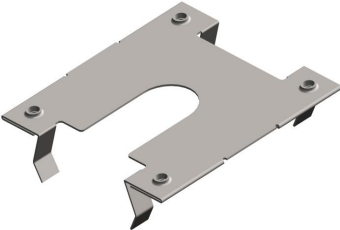
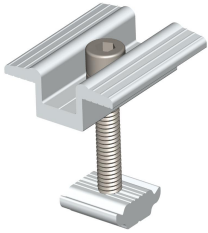
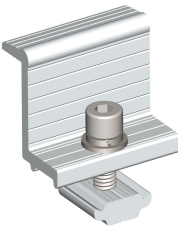


XIAMEN ART SIGN CO., LTD.


Roof Mounting System
Installation Guide - DR Rail



● Components List

| | |
|---|---|
|  |  |
| <p>AS-DR-01A DR 01A# Rail W32.30*H59.4mm Material: aluminum 6005-T5</p> | <p>AS-DRS-01 DR Rail Splice 01# L=150mm Material: aluminum 6005-T5 Allen Bolt M8*20 2pcs Application: aluminum rail-D nut series</p> |
|  |  |
| <p>AS-EK-01 Earthing kit 20mm width Material: aluminum 6005-T5 Cable Installation Diameter: within 6mm Cable Fasten Bolt: Hex Bolt M6*16</p> | <p>AS-GL Earthing lug 31.8*30mm Material: SUS304</p> |
|  |  |
| <p>AS-DMC-30 Mid clamp 40mm width Material: aluminum 6005-T5 Application: Frame panel thickness 30mm</p> | <p>AS-DEC-30 End clamp 40mm width Material: aluminum 6005-T5 Application: Frame panel thickness 30mm</p> |

● Components List

| | |
|---|--|
|  | |
| <p>AS-RH-02W Roof hook 2W# 50mm width Hanger bolt: M10*200 Application: metal / tin roof/tile roof</p> | |

● Installation Tools



Socket
Wrench



Angle
Grinder



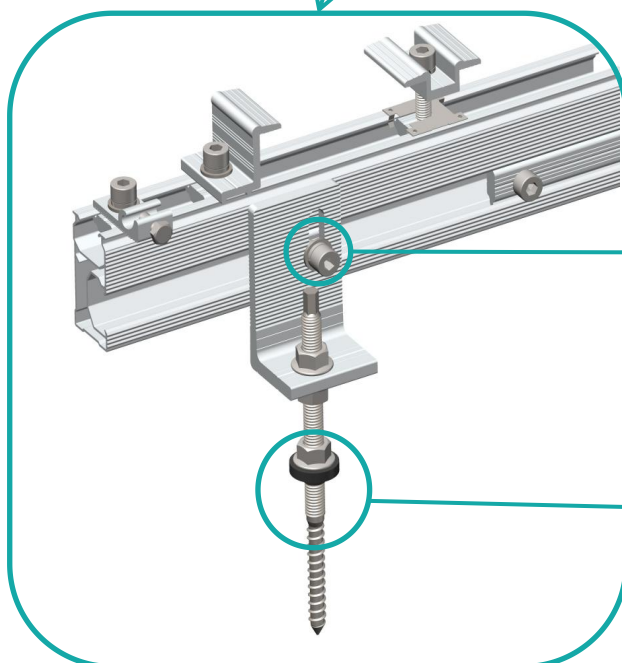
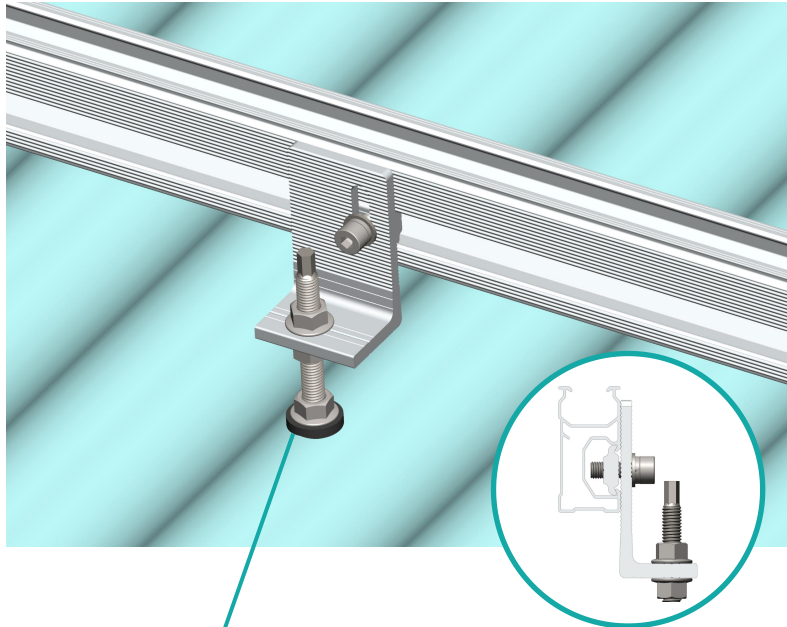
Tape
Measure



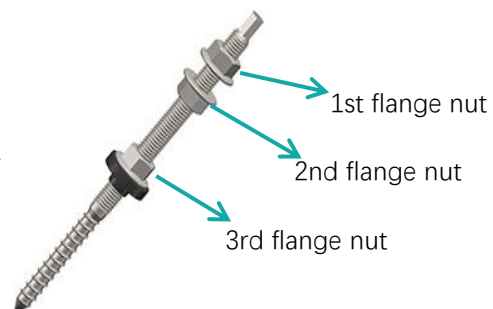
Impact Driver

STEP 1: L feet installation.

Mark the installation points, use the tool to fix L feet on roof purlin via hanger bolt M10*200



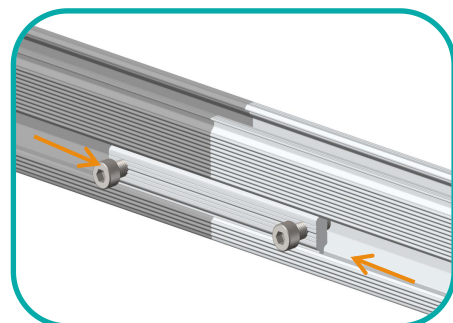
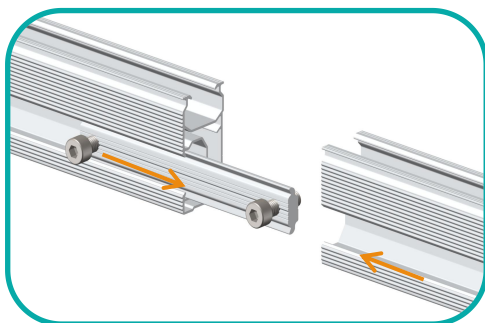
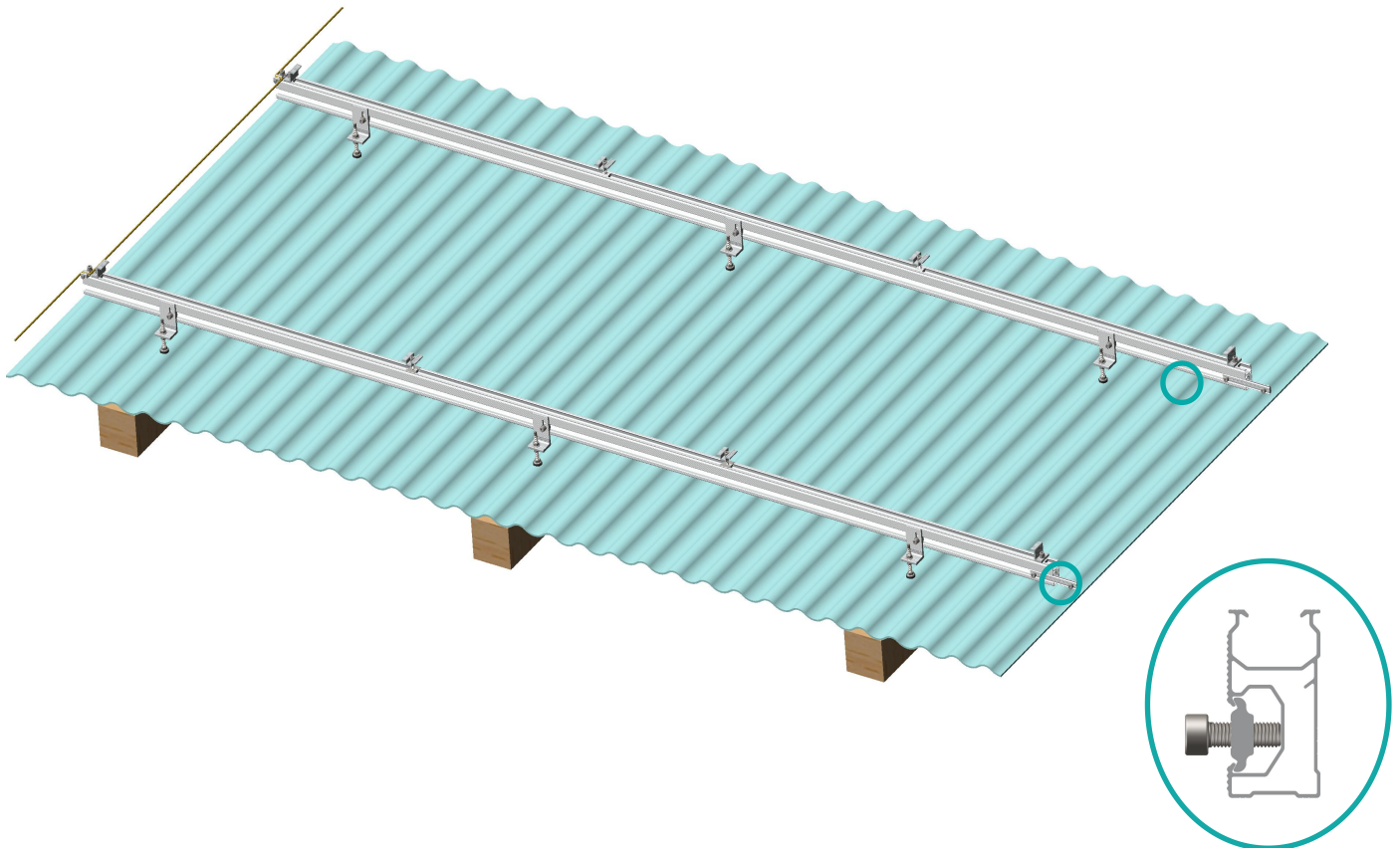
DR01A rail install on the L feet with D nut bolt.
Insert D nut set head into DR01A rail slot,
then fasten the allen bolt.



Hanger bolt fixed into roof purlin firstly,
fasten the 1st flange nut firmly.
Adjust the 2nd flange nut into
suitable position, and then put the L
feet on the bolt, fasten 3rd flange nut firmly.

STEP 2: Rail installation.

Insert the allen bolt into rail slot, and then fasten tightly by using socket wrench.

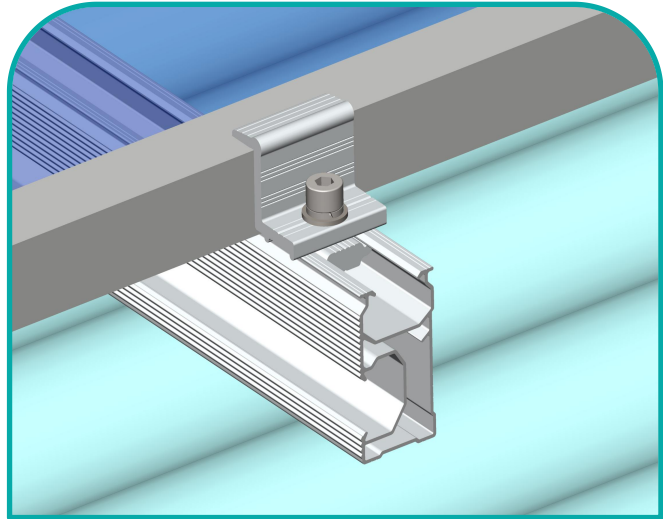
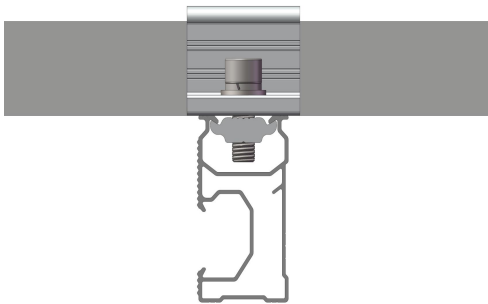


Rail splice for rails connection.

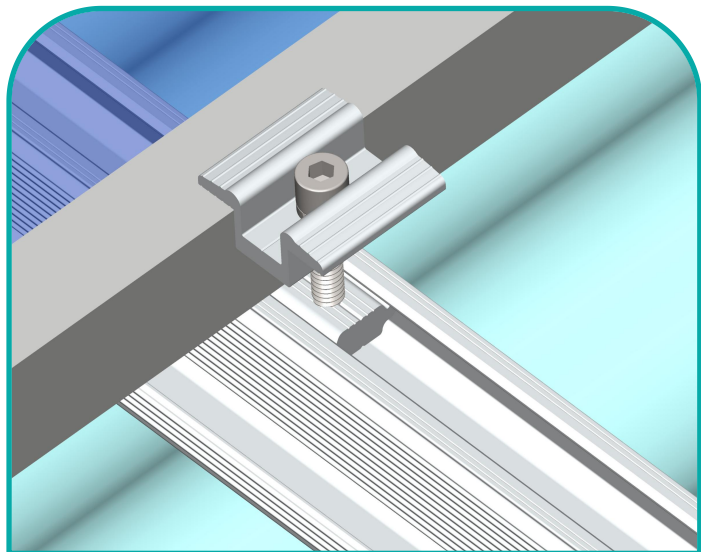
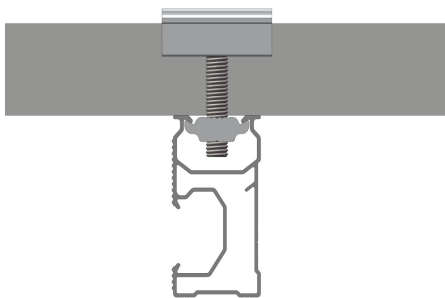
Fix one side of rail on half position of the rivet, and then insert another rail on the other half of rivet.

STEP 3: Solar panel installation.

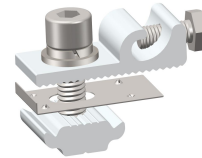
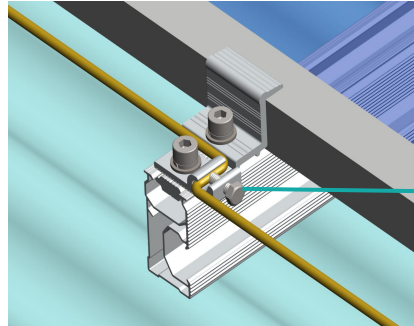
- ① Snap the D nut of end clamp into the rail slot, then use allen key to fasten the allen bolt M8*25 firmly.



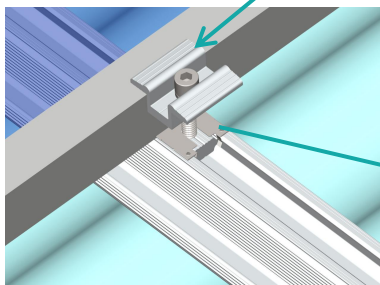
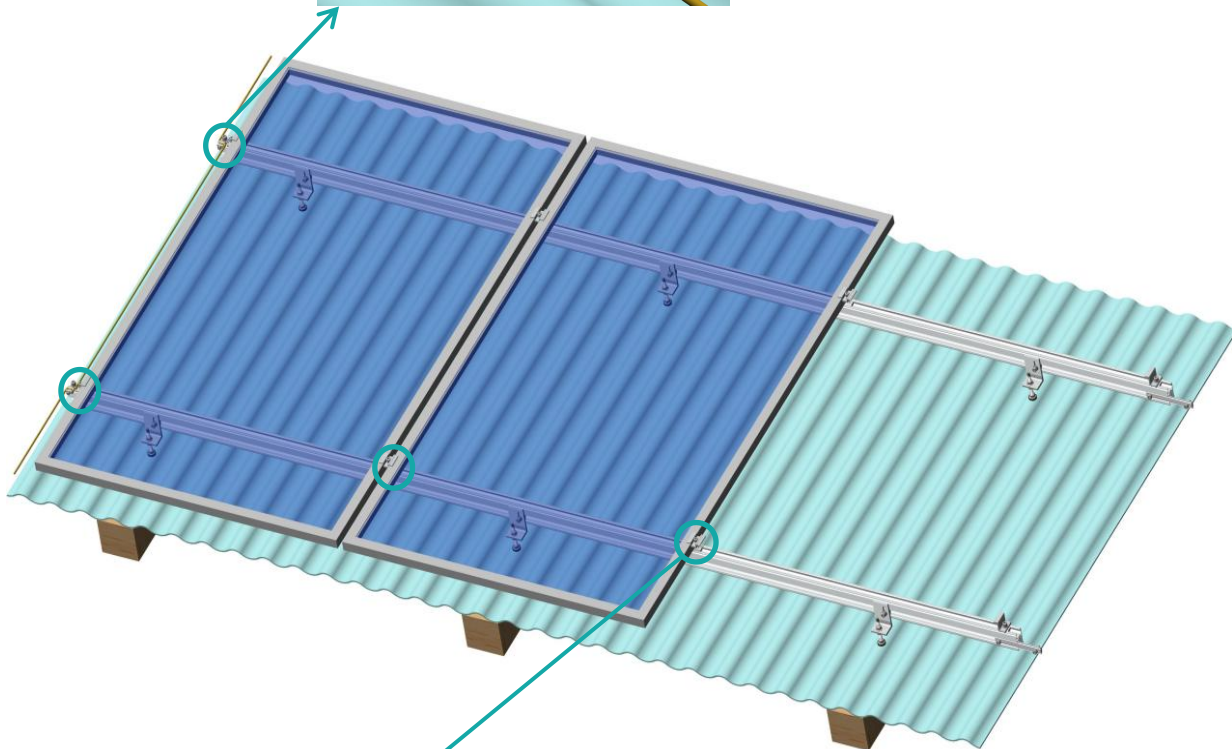
- ② Snap the D nut of mid clamp into the rail slot firstly, after installing another panel, fasten the screw firmly.



STEP 4: Grounding components connection.



Earthing kit is used for grounding which is usually installed at the edge of rail.



Grounding lug is used for solar mid clamp which is usually installed between mid clamp and rail.