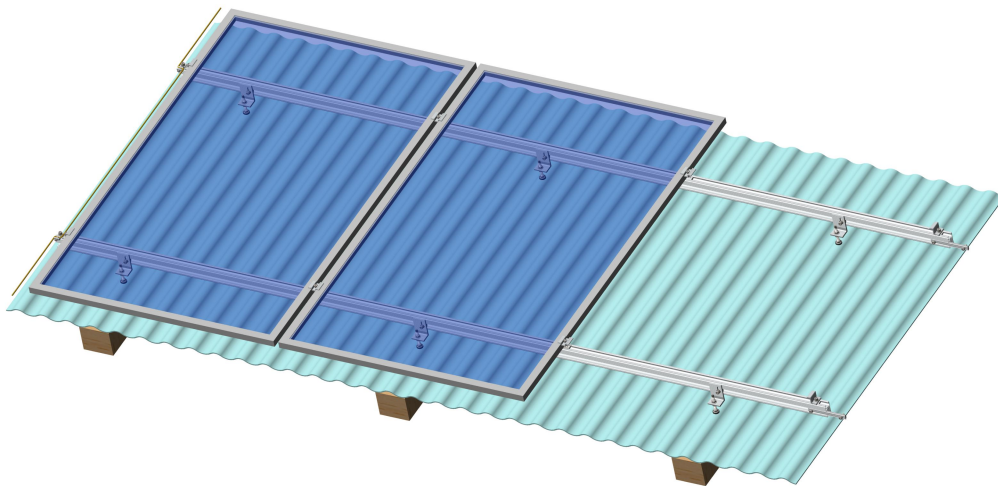
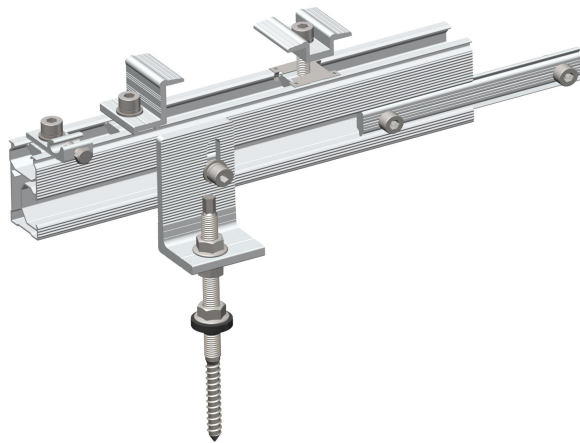




# XIAMEN ART SIGN CO., LTD.

## Technical Features

DR 01A Rail  
MID CLAMP  
END CLAMP  
RAIL SPLICE  
L-FEET  
EARTHING KIT  
HANGER BOLT



## ART SIGN DR 01A Rail



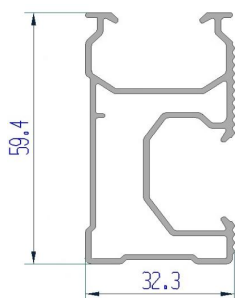
### Description

Suitable for different rooftop  
Beautiful appearance, smooth surface  
Light weight, easy to install, high Anti-corrosion

DR rail is a highly versatile rail as it can be used via any of its two channels depending on the needs of each component and the characteristics of the different screw for each type of tile roof. It is perfectly compatible with most of ART SIGN accessories.

### Technical features

The ART SIGN DR-Rail is structurally designed to support loads in two different locations and is made from 6005 T6 aluminum alloy. The recommended maximum distance between brackets is 2 m. \*



ITEM	HEIGHT [mm]	WIDTH [mm]	LENGTH [mm]	Material
DR 01A Rail	59.4	32.3	5100	Aluminum 6005 T5

\*This distance is recommended when the DR Rail is in a vertical position, remember that this distance may also vary depending on the type of assembly to be performed, but must not be large than 2 m.

#### Notes:

- The standard extruded dimensions of this rail are 2 m | 3m | 4m | 5m | 5.8 m | 6.0 m.